

**VANCOUVER (YVR/CYVR)**

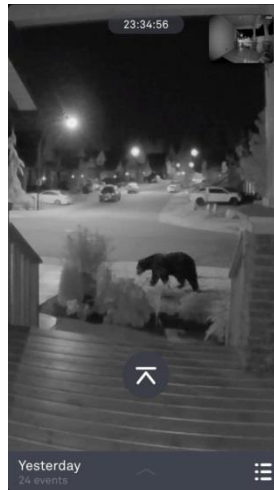
Elevation 13ft

**CATEGORY A**

No AV brief required.

**GENERAL**

- Airfield is situated 2nm to the S of the city of Vancouver at the mouth of the River Fraser
- Significant EASTERLY variation (19°E)
- Known as the Hollywood of the North, the city comes second to Los Angeles in TV production and third in feature film production behind Los Angeles and New York
- Bears may be encountered on movement areas



- All the grey squirrels in Stanley Park are descendants of eight pairs of grey squirrels received as a gift from New York City in 1909

**Threat Based Briefing Topics****CFIT**

- 30nm W Is Vancouver Island, peaks to ~7,000ft asl
- N is an E-W range of mountains. The 2,000ft asl contour is at a range of 9nm and ~6,000ft asl at 17nm N
- Further N are peaks to ~10,000ft asl
- Cascade Mountain Range rises steeply at 40nm E and SE with peaks to ~11,000ft asl

**Runway Incursion**

- Lido AOI gives details of taxiway restrictions, note advises Rwy 26L arrivals not authorised to turn on to the intersecting Rwy 31 without clearance

**Loss of Control**

- Birds are a hazard, especially during Spring and Autumn
- Bears may also be a concern

**ARRIVAL****Diversion Airports**

SEATTLE	SEA/KSEA	111 nm/162°T	CAT A
SAN FRANCISCO	SFO/KSFO	696 nm/177°T	CAT B
PORTLAND	PDX/KPDX	218 nm/174°T	CAT A
CALGARY	YYC/CYYC	371 nm/072°T	CAT A

**Approach**

- Expect radar vectors
- Converging ILS procedures are published
- Lido AOI has Noise Procedures pages, including details of preferred runways
- Visual Approach procedures are published

**GROUND**

- Call local company frequency with arrival and departure chocks times
- Part of taxiway to the S of Rwy 08R/27L used as a runway; designated Rwy 26A (~1000m)
- Refer to the Lido AOI for notes regarding Coded Taxi Routes
- Steve Williams' house is available for accommodation in the event of aircraft struck by lightning
- Excellent IPA available from the Hearthstone Brewery

**Taxi**

- Numerous A380 taxi restrictions. LIDO charts show A380 taxi routes in green on charts 3-90 and 3-100
- Crew reports indicate that unlit aircraft may be parked to the left of taxiway V in de-icing pans W17, W18 and W19. Wingtip clearance appeared minimal, so taxi with caution.
- Gate 64 preferred for A380 operations, Gate 65 alternative

**DEPARTURE**

- Performance restrictions available from CARD and the Performance Manual
- Rwy 08L/26R full length start-points are Twys M10 and M9

- For take-off data from Twys M8 and M7 select Intersections on the CARD request
- Simultaneous Parallel departures may be in use

**WEATHER**

- Possible poor visibility with NE wind due to smoke
- Fog from October to January – particularly November
- Rain may fall as snow from November to March

**OPERATIONAL INFORMATION**

<b>Handling Agent</b>	SIMFEST (Pax)/Swissport (Ramp)
<b>Handling Agent VHF</b>	130.2
<b>Potable Water</b>	Uplift Permitted

<b>IF ONLY Electrical Power is required</b>	<b>Use ground power at all times</b>
<b>If BOTH electrical power and air conditioning is required:</b>	<b>Use both ground services at all times</b>